



## **On-line PICASSO PROJECT**

**Comprehensive Catalogue Raisonné  
Prof. Dr. Enrique Mallen**

**1944**



**Portrait de jeune femme (Inès Sassier)**. Paris. 1-January/1944. Pencil on paper laid down on card. 50 x 40,8 cm. Christie's. #49C, 12069, 05/12/16.

**OPP.44:138**; PP.44:001; Z.XIII:208

---

**Le baiser**. Paris. 3-January/1944. Oil on paper. [50 x 65] 51 x 66 cm. Marina Picasso Collection. (Inv 44480). Courtesy Galerie Jan Krugier, Geneva.

**OPP.44:073**; PP.44:002; Z.XIII:205; BA.03a\*:198



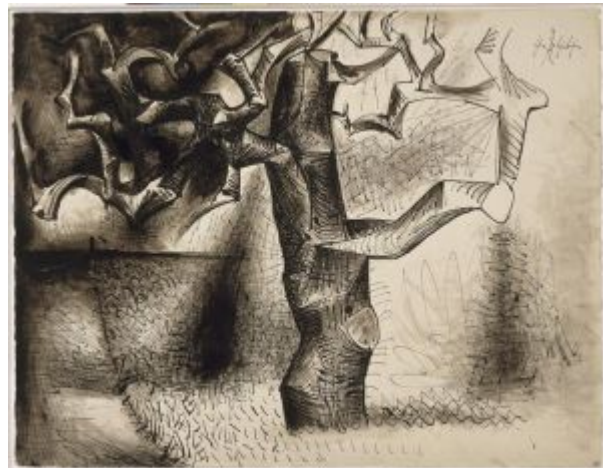


**Deux têtes.** Paris. 3-January/1944. Oil on paper [OïC]. 65 x 50 cm. Private collection.

**OPP.44:155**; PP.44:003; Z.XIII:202

**Arbres (Études).** Paris. 4-January/1944. India ink & wash. 50,7 x 65,5 cm. Musée Picasso, Paris. Dation 1979.

**OPP.44:018**; MPP:1331; PP.44:005; Z.XIII:211; GB.19\*:137; LU.93:237; MA.08a\*:n/a; TO.99\*:86; WS.93\*:83a





**Tronc d'arbre et ses branches.** Paris. 4-January/1944.  
Charcoal. 65,5 x 50,5 cm. Marina Picasso Collection. (Inv  
04604). Courtesy Galerie Jan Krugier, Geneva.

**OPP.44:127**; PP.44:006; Z.XIII:214b; MP.81\*:228;  
SG.88\*:59

---

**Études d'arbres.** Paris. 4-January/1944.  
India ink on paper. 65 x 50 cm. Private  
collection.

**OPP.44:156**; PP.44:004; Z.XIII:209





**Verre et tasse.** Paris. 10-January/1944. Oil on canvas [OiC]. 41 x 24 cm. Private collection.

**OPP.44:166**; PP.44:007; Z.XIII:227

---

**Nature morte.** Paris. 12-January/1944. Oil on canvas. 41 x 24 cm. Pandolfini Casa d'Aste, Milan. 2019. Formerly Calisto Tanzi Collection.

**OPP.44:167**; PP.44:008; Z.XIII:228





**Citrons et verre.** Paris. 14-January/1944. Oil on canvas. 27 x 41 cm. Christie's. #53, 2477, 11/01/11.

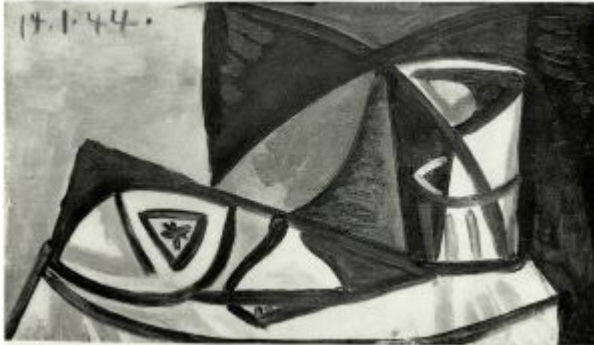
**OPP.44:113**; PP.44:011; Z.XIII:225

---

**Citrons et verre.** Paris. 14-January/1944. Oil on canvas. [24 x 41] 26,7 x 41,3cm. Christie's. #732, 22613, 05/18/24.

**OPP.44:163**; PP.44:009; Z.XIII:223





**Nature morte au citron.** Paris. 14-January/1944.  
Oil on canvas [OiC]. 41 x 27 cm. Private collection.

**OPP.44:164**; PP.44:010; Z.XIII:224

---

**Le homard.** Paris. 15-January/1944. Oil on  
canvas. 26,7 x 45,7 cm. Private collection.

**OPP.44:055**; HJ.46:104





**Nature morte.** Paris. 15-January/1944. Oil on canvas [OiC]. 61 x 38 cm. Private collection.

**OPP.44:165**; PP.44:012; Z.XIII:226

---

**Tête.** Paris. February/1944. Brush & ink on paper. 37,9 x 34,8 cm. Sotheby's. #169, L06006, 02/08/06.

**OPP.44:062**







**Portrait de jeune fille.** Paris. [February]/1944.  
Charcoal on paper. 55,5 x 48 cm. Private collection.

**OPP.44:145**; MG.04b\*:86

---

**Femme allaitant son enfant.** Paris.  
[February]/1944. Graphite on paper. 22 x  
14 cm. Private collection.

**OPP.44:147**; Z.XIII:113; LU.93:309





**Femmes et enfants.** Paris. [February]/1944.  
Graphite on paper. 22 x 14 cm. Private collection.

**OPP.44:148**; Z.XIII:114

---

**Femme allaitant son enfant.** Paris.  
[February]/1944. Graphite on paper. 22 x  
14 cm. Private collection.

**OPP.44:149**; Z.XIII:115





**Femme allaitant son enfant.** Paris.  
[February]/1944. Graphite on paper. 22 x 14 cm.  
Private collection.

**OPP.44:150**; Z.XIII:116

**Femme et enfant.** Paris. [February]/1944.  
Graphite on paper. 22 x 14 cm. Private  
collection.

**OPP.44:151**; Z.XIII:117



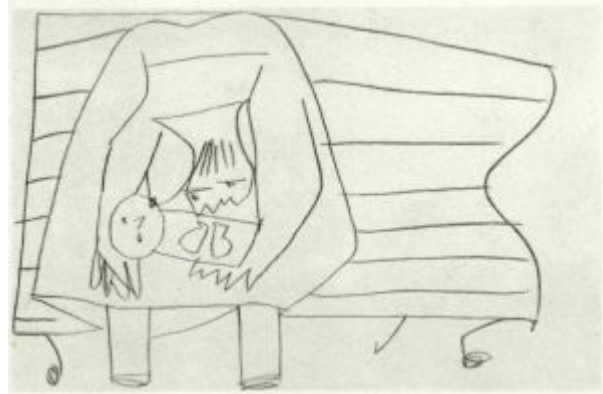


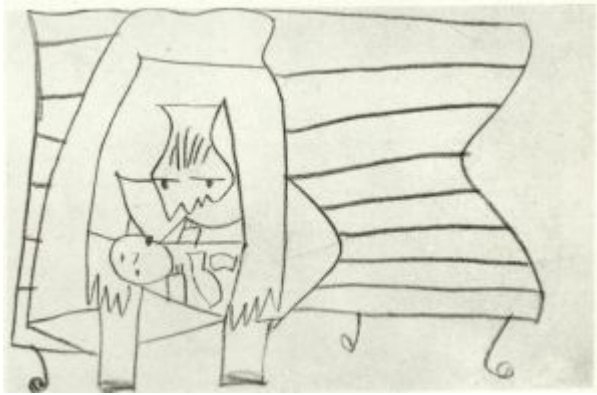
**Femme allaitant son enfant.** Paris.  
[February]/1944. Graphite on paper. 22 x 14 cm.  
Private collection.

**OPP.44:152**; Z.XIII:118

**Femme allaitant son enfant.** Paris.  
[February]/1944. Graphite on paper. 22 x  
14 cm. Private collection.

**OPP.44:153**; Z.XIII:119





**Femme allaitant son enfant.** Paris.  
[February]/1944. Graphite on paper. 22 x 14 cm.  
Private collection.

**OPP.44:154**; Z.XIII:120

---

**Tête.** Paris. February/1944. India ink on paper. 65 x 50  
cm. Private collection.

**OPP.44:159**; PP.44:018; Z.XIII:216





**entre les doigts ... (3), d'entre les doigts ... (4).** Paris. 4, 5, 6, 7, 9-February/1944. Black ink. 21 x 13,5 cm. Musée Picasso, Paris.

**OPP.44:083**; CW.89:428p



**Femme allaitant son enfant.** Paris. 7-February/1944. Pen & black ink on brown paper. 32,5 x 25,3 cm. Musée Picasso, Paris. Dation 1979.

**OPP.44:093**; MPP:1328; PP.44:016; Z.XIII:231; GB.19\*:138; LU.93:307



**Étude pour Le Vert-Galant.** Paris. 7-February/1944. Ink on paper. 32,5 x 25 cm. Private collection.

**OPP.44:157**; PP.44:014; Z.XIII:213

**Étude.** Paris. 7-February/1944. Color pencils on paper [Oic]. 32,5 x 25 cm. Private collection.

**OPP.44:161**; PP.44:013; Z.XIII:214; LU.93:308





**Étude.** Paris. 7-February/1944. India ink on paper.  
32,5 x 25 cm. Private collection.

**OPP.44:168**; PP.44:015; Z.XIII:230

---

**Le Vert-Galant.** Paris. 8-February/1944.  
Pen, ink & watercolor on paper. 30,5 x 40  
cm. Museum Ludwig, Köln. (Inv ML/Z  
2001/056). Schenkung 2001.

**OPP.44:019**; TO.99\*:87; WO.92\*:52







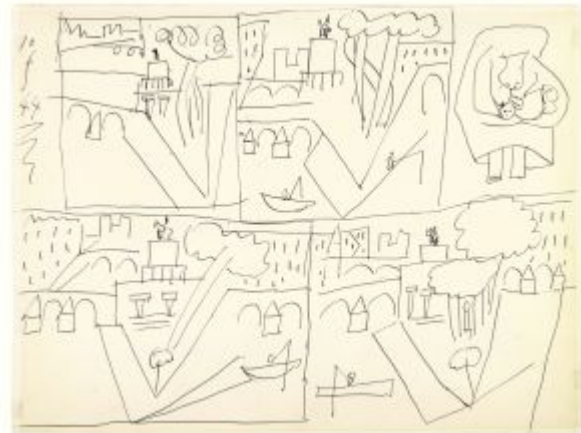
**Femme allaitant son enfant.** Paris. 10-February/1944. Pen & ink on paper [Obverse of *Le Vert-Galant (Études)*]]. [40 x 30,5] 41 x 31,3 cm. Christie's. #266, 13487, 03/01/17. Formerly Sotheby's. #164, LN8775, 12/08/98.

**OPP.44:078;** GE.73b\*:104

---

**Le Vert-Galant (Études).** Paris. 10-February/1944. Pen & ink on paper [Reverse of *Femme allaitant son enfant*]. 40 x 30,5 cm. Christie's. #266, 13487, 03/01/17. Formerly Sotheby's. #164, LN8775, 12/08/98.

**OPP.44:079**





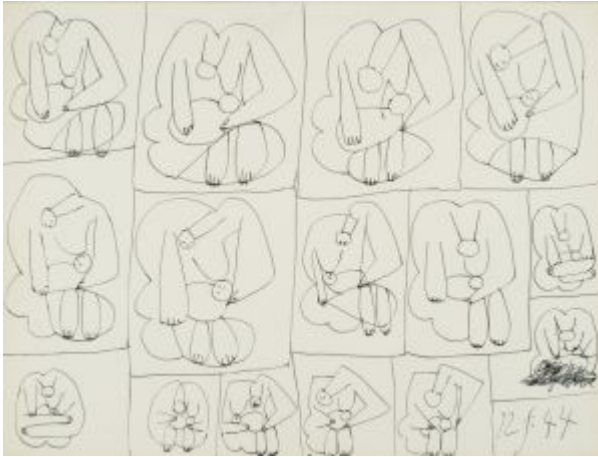
**Maternité (Le Vert-Galant)**. Paris. 12-February/1944. Pen, India ink, watercolor & gouache on paper. 30,5 x 40,6 cm. William S. Lipschutz Collection. Formerly Sotheby's. #458, 6489, 11/04/93.

**OPP.44:020**; MM.93:68; TO.99\*:88; WS.94:91p

**Femme allaitant son enfant**. Paris. 12-February/1944. Pen & ink on paper. 30 x 40 cm. Marina Picasso Collection. Courtesy Galerie Jan Krugier, Geneva.

**OPP.44:107**; WO.92\*:53





**Femme allaitant son enfant.** Paris. 12-February/1944. Pen & ink on paper. 30,7 x 41 cm. Sotheby's. #303, L15004, 02/04/15. Formerly Jan Krugier Collection; Marie-Thérèse Walter Collection.

**OPP.44:133**; GE.73b\*:107

**Tête.** Paris. 24-February/1944. Gouache, brush & ink on paper. 65,3 x 50,3 cm. Christie's. #252, 1104, 02/07/13.

**OPP.44:007**; PP.44:020; Z.XIII:218





**Tête.** Paris. 24-February/1944. India ink on paper. 65 x 50 cm. Private collection.

**OPP.44:158**; PP.44:017; Z.XIII:215



**Tête.** Paris. 24-February/1944. India ink on paper. 65 x 50 cm. Private collection.

**OPP.44:160**; PP.44:019; Z.XIII:217



**Buste de femme (Portrait de Dora Maar).** Paris. 5-March/1944. Oil on canvas. [91,9 x 59,9] 92 x 60 cm. Duhamel Fine Art. 2017. Formerly Scott White Contemporary Art. 2009.

**OPP.44:011**; PP.44:023; Z.XIII:235; BS.58\*:13; BS.60\*:23; BS.67a\*:25; CH.51\*:32; GP.96:254p; KZ.60\*:184; NY.50c\*:6; PA.46b\*:10; TA.66\*:40

---

**Buste de femme.** Paris. [1943] 5-March/1944. Oil on canvas. 81 x 65 cm. Tate Modern, London. (Inv L03007). Lent from a private collection 2011 On long term loan.

**OPP.44:076**; PP.44:022; Z.XIII:232; BS.55:170





**Buste de femme.** Paris. 5-March/1944. Oil on canvas. 81 x 65 cm. Private collection. Formerly Sotheby's. #144, NY7305, 05/11/99.

**OPP.44:025**; PP.44:021; Z.XIII:229

**Femme au chapeau à fleurs (Dora Maar).** Paris. 6-March/1944. Oil on canvas. 81 x 65 cm. The National Gallery of Canada, Ottawa. (Inv 39056). Gift of Nahum & Sheila Gelber, Montreal, 1997.

**OPP.44:057**; PP.44:024; Z.XIII:236; PA.45b\*:n/a; VO.16\*:8p





**Buste de femme en gris.** Paris. 6-March/1944. Oil on canvas [OIC].  
92 x 60 cm. Private collection, Paris.

**OPP.44:110**; PP.44:025; Z.XIII:233; MJ.55\*:106; PA.44a\*:n/a

---

**Buste de femme au chapeau bleu.** Paris. 7-March/1944. Oil  
on canvas. 92 x 60,2 cm. Musée Picasso, Paris. Dation 1979.

**OPP.44:052**; MPP:193; PP.44:027; Z.XIII:302; AA.04\*:n/a;  
BD.16\*:69; BS.55:177; DD.61:243p; HJ.46:80; MA.08a\*:n/a;  
MB.06\*:n/a; MI.53\*:107; MJ.55\*:107; MM.67:55;  
MN.80\*:n/a; MP.85:167; ND.01\*:31; PA.79a\*:307;  
RP.67a:28; SD.05\*:101; SG.88:153p; UP.00:870





**Buste de femme.** Paris. 7-March/1944. Ink & gouache [OïC].  
S/U. Private collection.

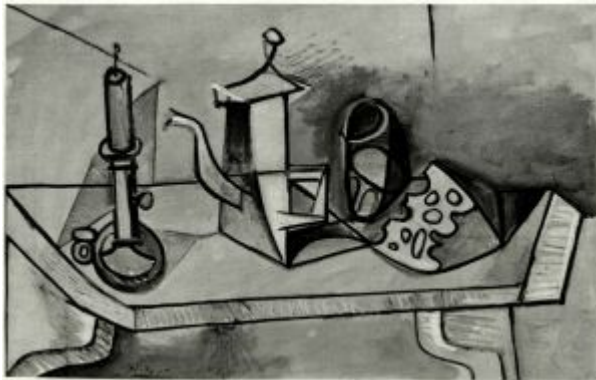
**OPP.44:169**; PP.44:026; Z.XIII:234

**Nature morte au gruyère.** Paris. 13-March/1944. Oil on canvas. 60 x 92 cm.  
Sotheby's. #45, LN7384, 06/24/97.

**OPP.44:014**; PP.44:029; Z.XIII:238;  
LL.90:112; LU.93:275p; NY.48e\*:3;  
SF.48b\*:19







**Nature morte au gruyère.** Paris. 14-March/1944. Oil on canvas. 60 x 91,7 cm. Private collection.

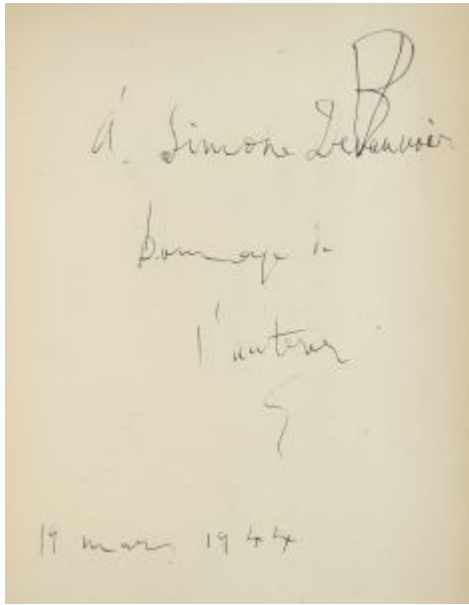
**OPP.44:140**; PP.44:028; Z.XIII:239; NY.48e\*:3; PA.45b\*:13

---

**Femme à la broche en tête de sphinx.** Paris. 17-March/1944. Oil on canvas. 81 x 60 cm. Maya Widmaier Picasso Collection, Paris.

**OPP.44:002**; PP.44:030; Z.XIII:237; SG.88\*:30; WW.91:459p





**Dédicace (À Simone Beauvoir)**. Paris. 19-March/1944. Pen on front page of Pablo Picasso, *Le désir attrapé par la queue*. 31,7 x 24 cm. Sotheby's. #148, PF1223, 03/28/12.

**OPP.44:118**

**Tête de femme (Dora Maar)**. Paris. [Spring]/1944. Oil on paper laid down on canvas. 39 x 28,5 cm. E and R Cyzer 20th Century Art. Formerly Sotheby's. #39, L07007, 06/19/07.

**OPP.44:072**; PP.44:079; Z.XIII:263





**Cafetière et tasse.** Paris. 2-April/1944. Oil on canvas. 55,2 x 44.1 cm. San Francisco Museum of Modern Art. (Inv 91.177). Acquired 1991. Bequest of Elise S. Haas.

**OPP.44:088**; PP.44:032; Z.XIII:246; PA.44a\*:n/a

---

**Cafetière.** Paris. 2-April/1944. Oil on canvas [Oic]. 81 x 60 cm. Private collection.

**OPP.44:172**; PP.44:031; Z.XIII:250





**La cafetière bleue (Cafetière et tasse)**. Paris. 3-April/1934. Oil on canvas. 24 x 15 cm. Christie's. #42, 7021, 02/07/05.

**OPP.44:030**; PP.44:033; Z.XIII:247; HU.68\*:58; LP.99:188p; ST.54\*:281

---

**Bougeoir et verre**. Paris. 3-April/1944. Oil on canvas. 55 x 33 cm. Christie's. #83, 2045, 11/06/08. Formerly Christie's. #631, 9358, 05/10/00.

**OPP.44:032**; PP.44:035; Z.XIII:249; TH.49\*:118





**Nature morte.** Paris. 3-April/1944. Oil on canvas [OiC]. 61 x 38 cm.  
Private collection.

**OPP.44:171**; PP.44:034; Z.XIII:248

**Nature morte.** Paris. 4-April/1944. Oil on  
canvas. [60 x 92] 59,5 x 92 cm. Helly  
Nahmad Collection, Monaco/London.  
Formerly Sotheby's. #9, N08546,  
05/05/09; Mr. Jacques Sarlie Collection, NY.

**OPP.44:033**; PP.44:036; Z.XIII:255;  
AB.46:237p; AB.57\*:n/a; KG.71:28;  
KG.85:28; PH.58\*:212a; RP.60\*:176





**Nature morte à la bougie.** Paris. 4-April/1944.  
Oil on canvas. [60 x 92] 63,2 x 91,7 cm.  
Christie's. #51, 22617, 03/07/24. Formerly  
Sotheby's. #44, L10006, 06/22/10.

**OPP.44:034**; PP.44:037; Z.XIII:254; NY.48s\*:n/a

**Nature morte à la bougie.** Paris. 5-  
April/1944. Oil on canvas. [65 x 92] [64 x  
91,5] 64,6 x 91,8 cm. Pola Museum of Art,  
Hakone, Kanagawa, Japan. Formerly  
Sotheby's. #73, 11/28/89.

**OPP.44:035**; PP.44:038; Z.XIII:241;  
BS.55:179





**Nature morte.** Paris. 5-April/1944. Oil on canvas. 65,7 x 92,1 cm. The Museum of Modern Art, Saitama.

**OPP.44:036**; PP.44:039; Z.XIII:256; JB.92:284p; NY.46m\*:11; NY.48r\*:10; TO.04\*:71

---

**Nature morte.** Paris. 6-April/1944. Oil on canvas. 60 x 92 cm. Sotheby's. #19, L15006, 06/24/15.

**OPP.44:037**; PP.44:040; Z.XIII:264; PA.45b\*:n/a





**Nature morte.** Paris. 6-April/1944. Oil on canvas [OIC]. 65 x 92 cm. Private collection.

**OPP.44:038**; PP.44:041; Z.XIII:265; HJ.46:32; NY.48e\*:5

**Cafetière et chandelier (Nature morte au bougeoir).** Paris. 8-April/1944. Oil on canvas. 73 x 92 cm. Musée National d'Art Moderne, Centre Georges Pompidou, Paris. (Inv AM.4498.P). Donation Marguerite Savary, 1969.

**OPP.44:012**; PP.44:042; Z.XIII:240; AB.06\*:171; AU.89\*:42; BA.18\*:239p; GP.96:255p; JB.92\*:116; ND.01\*:32; PA.69e\*:n/a; PA.70\*:12; PF.10\*:27; TK.77a\*:55; UW.84\*:18; WS.11:233p; WS.93\*:86; YB.99\*:135







**Femme assise.** Paris. 10-April/1944. Oil on canvas [OïC]. 46 x 7 cm.  
Private collection.

**OPP.44:077**; PP.44:044; Z.XIII:258; HJ.46:108

---

**Femme assise.** Paris. 10-April/1944. Oil on canvas [OïC]. 46 x  
27 cm. Private collection.

**OPP.44:173**; PP.44:043; Z.XIII:257





**Femme se lavant.** Paris. 10-April/1944. India ink on paper. 55 x 32,5 cm. Private collection.

**OPP.44:203**; PP.44:045; Z.XIII:317

---

**Nature morte.** Paris. 11-April/1944. Oil on canvas [OiC]. 27 x 46 cm. Private collection.

**OPP.44:039**; PP.44:047; Z.XIII:286





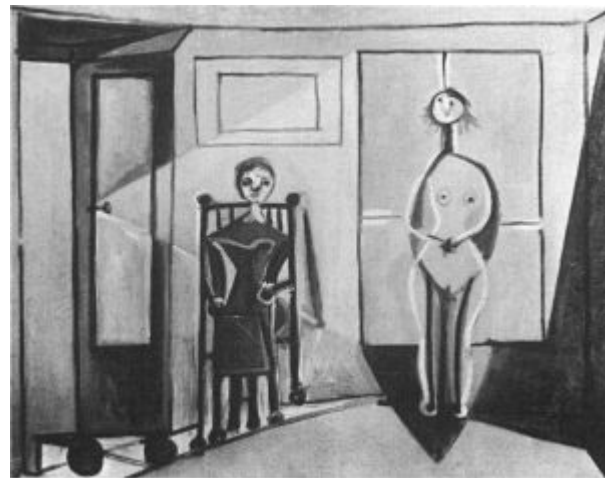
**Nature morte à la cafetière.** Paris. 11-  
April/1944. Oil on canvas. 61 x 81 cm. Christie's.  
#055, 1831, 05/09/07.

**OPP.44:071**; PP.44:046; Z.XIII:253; NY.81b\*:21

---

**Nu et femme assise.** Paris. 12-  
April/1944. Oil on canvas [OïC]. 73 x 92  
cm. Private collection.

**OPP.44:040**; PP.44:048; Z.XIII:251;  
PA.45b\*:n/a; WR.96:412p





**Portrait de femme (Françoise Gilot)**. Paris. 15-April/1944. Oil on paper laid down on canvas. 65,7 x 50,5 cm. Christie's. #135, 7243, 06/20/06.

**OPP.44:021**; PP.44:051; Z.XIII:270; JV.06\*:167p; WR.96:413p

**Nu et femme assise**. Paris. 15-April/1944. Oil on canvas [OIC]. 73 x 92 cm. Morton G. Neumann Family Collection, Chicago.

**OPP.44:041**; PP.44:049; Z.XIII:252; BS.55:180; CH.54a\*:31; HJ.46:10; JR.62\*:6.12; NY.48e\*:14; SF.48b\*:20; WR.96:412p





**Portrait de femme (Françoise Gilot)**. Paris. 15-April/1944.  
Oil on canvas [Oic]. 65 x 50 cm. Private collection.

**OPP.44:042**; PP.44:050; Z.XIII:266

---

**Portrait de femme au fauteuil**. Paris. 16-April/1944. Oil  
on canvas. 92 x 65 cm. Fundación Almine & Bernard Ruiz-  
Picasso para el Arte.

**OPP.44:064**; PP.44:053; Z.XIII:242; GA.00\*:68;  
MG.03b\*:45





**La dame en noir.** Paris. 17-April/1944. Oil on canvas [OIC]. 65 x 46 cm. Private collection.

**OPP.44:176**; PP.44:054; Z.XIII:262

---

**Nu au divan.** Paris. 18-April/1944. Oil on canvas. 73 x 92 cm. Museo Picasso, Málaga. On temporary loan from Fundación Almine & Bernard Ruiz-Picasso para el Arte.

**OPP.44:063**; PP.44:055; Z.XIII:303; DP.20\*:121; GS.03:1.22; JR.12\*:39p





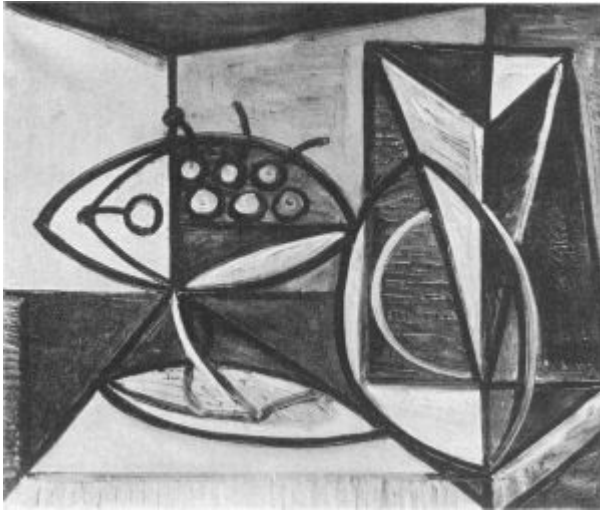
**Portrait de de Montserrat Pla (À l'Antoni Plá)**, Paris. 18-April/1944. Pen & ballpoint pen on paper. 37 x 27,2 cm. Museu Picasso, Barcelona. Donation 1970.

**OPP.44:111**; MPB:112.942

**Nu couché et femme se lavant les pieds**. Paris. 18-April~18-August/1944. Oil on canvas. 97 x 130 cm. Sotheby's. #44, N09340, 05/05/15. Formerly Mrs. George S. Mack Collection.

**OPP.44:004**; PP.44:055a; Z.XIII:273; AM.46\*:21; BS.55:183; DP.20:328p; HJ.46:11; LO.45a\*:9; MI.53\*:109; NY.56b\*:n/a; SN.98\*:75; TO.64\*:238; WC.62\*:12





**Nature morte au compotier.** Paris. 20-April/1944. Oil on canvas [OiC]. 38 x 46 cm. Private collection.

**OPP.44:043**; PP.44:056; Z.XIII:288

**Femme couchée.** Paris. 21-April/1944. Oil on canvas [OiC]. 73 x 92 cm. Private collection.

**OPP.44:044**; PP.44:057; Z.XIII:304; DP.20\*:328p; HJ.46:9; HS.98:68p







**Femme en bleu.** Paris. 25-April/1944. Oil on canvas. 130 x 97 cm. Musée National d'Art Moderne, Centre Georges Pompidou, Paris. (Inv AM.2733P). Don de l'artiste 1947.

**OPP.44:031**; PP.44:052; Z.XIII:245; AU.89\*:43; GB.14\*:74; GB.19\*:133; GP.96:252p; LU.93:271; UP.00:872

---

**Tête de femme.** Paris. 27-April/1944. Oil on canvas. 92 x 73 cm. Fondation Beyeler, Riehen/Basel. On extended loan. Anthax Collection Marx. Formerly Dr. Erich Marx Collection, Berlin.

**OPP.44:009**; PP.44:059; Z.XIII:243; BU.22\*:136; CG.12\*:80; CT.23\*:26; GB.19\*:134; MA.17\*:176p; MD.02\*:231p; SG.88\*:31





**Tête de femme.** Paris. [26] 27-April/1944. Oil on canvas. 92 x 73 cm. Private collection.

**OPP.44:114**; PP.44:058; Z.XIII:244; MM.06\*:28

---

**La Torera: pour Roby (Robert-J. Godet, L'Âge de soleil).** Paris. 29-April/1944. Etching. 28,2 x 22,5 cm. Musée Picasso, Paris. Also Christie's. #75, 5107, 06/23/04.

**OPP.44:028**; B.I:369; Ba:690; GC:57; MPP:2708





**Maurice Toesca, Six Contes Fantastiques 01 (Visage de femme)**. Paris. 30-April/1944. Drypoint. 35 x 26,5 cm. The Museum of Modern Art, NYC. (Inv 1002.1964.B1). Also Staatsgalerie Stuttgart. (Inv D 54/71). Graphische Sammlung..

**OPP.44:023**; B.I:363; Ba:691.B; GC:66.1; ED.07\*:46; GM.81\*:128

**Maurice Toesca, Six Contes Fantastiques 02 (Femme nue)**. Paris. 30-April/1944. Etching on wove paper, edition 250. [34,5 x 26,7] 35 x 26,5 cm. Sotheby's. #296, N08123, 10/28/05.

**OPP.44:056**; B.I:365; Ba:692; GC:66.2; GM.81\*:129





**Maurice Toesca, Six Contes Fantastiques 06 (Jeune fille de profil couronnée de fleurs)**. Paris. 30-April/1944. Etching. 33 x 25,4 [35 x 26,5] cm. Christie's. #135, 1368, 04/28/04.

**OPP.44:059**; B.I:366; Ba:696.Bb5; GC:66.6; GM.81\*:133

**Maurice Toesca, Six Contes Fantastiques 05 (Visage)**. Paris. 30-April/1944. Drypoint. 32,4 x 24,7 cm. Sotheby's. #387, PF6025, 10/11/06.

**OPP.44:068**; B.I:367; Ba:695.B; GC:66.5; GM.81\*:132; LM.06\*:12





**Maurice Toesca, Six Contes Fantastiques 04 (Sculpture).**  
Paris. 30-April/1944. Drypoint, edition 30. [34,5] 35 x 26,5 cm.  
Albright-Knox Art Gallery, Buffalo, NY. Also Sotheby's. #208,  
N08358, 11/01/07.

**OPP.44:074**; B.I:368; Ba:694.B; GC:66.4; GM.81\*:131;  
LM.06\*:13

**Maurice Toesca, Six Contes Fantastiques 03 (Tête de femme).**  
Vallauris. 30-April/1944. Burin. 40  
x 31,5 cm. Sotheby's. #386, PF6025, 10/11/06.

**OPP.44:075**; B.I:364; Ba:693.Bb5; GC:66.3;  
GM.81\*:130





**Tête (I)**. Paris. 30-April/1944. Burin. 34,8 x 26,7 cm. Musée Picasso, Paris. Dation 1979.

**OPP.44:146**; Ba:694.1; MPP:2965

---

**Profil et femme nue**. Paris. 30-April/1944. Burin. 34,9 x 26,7 cm. Musée Picasso, Paris. Dation 1979.

**OPP.44:243**; Ba:691; MPP:2960





**Profil de femme.** Paris. 30-April/1944. Burin. 39,9 x 26,7 cm. Musée Picasso, Paris. Dation 1979.

**OPP.44:244**; Ba:693.1; MPP:2961



**Nu au collier.** Paris. 30-April/1944. Burin. 34,9 x 26,7 cm. Musée Picasso, Paris. Dation 1979.

**OPP.44:245**; Ba:692.1; MPP:2962

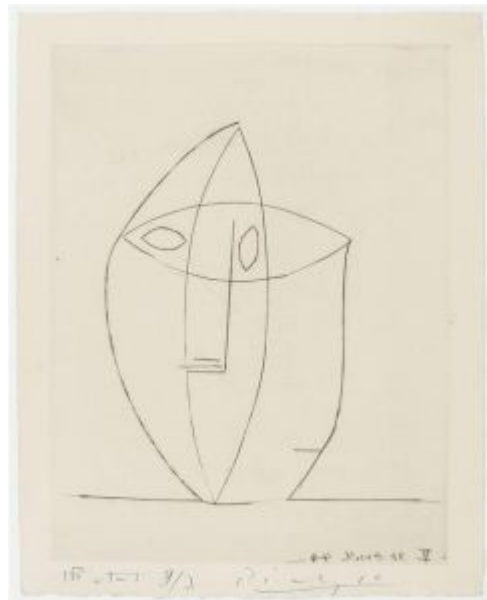


**Jeune fille de profil couronnée de fleurs.** Paris. 30-April/1944. Burin. 39,9 x 26,7 cm. Musée Picasso, Paris. Dation 1979.

**OPP.44:246**; Ba:696.1; MPP:2963

**Tête.** Paris. 30-April/1944. Burin. 34,8 x 27,7 cm. Musée Picasso, Paris. Dation 1979.

**OPP.44:247**; Ba:695; MPP:2964







**Buste de femme.** Paris. 1-May/1944. Oil on canvas. 35 x 27 cm. Christie's. #314, 2846, 05/07/14.

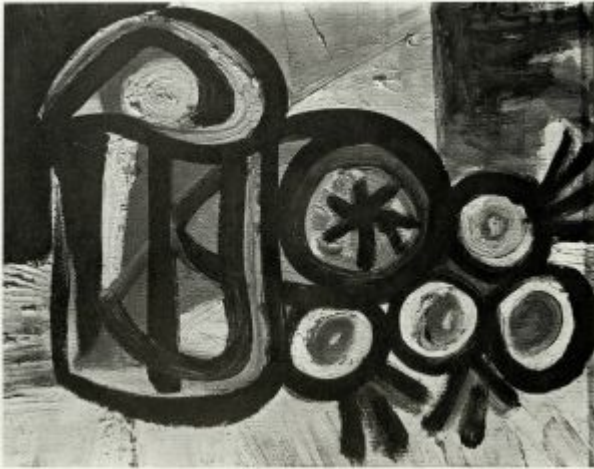
**OPP.44:131**; PP.44:061; Z.XIII:295

---

**Tête de femme.** Paris. 1-May/1944. Oil on canvas. 46 x 33 cm. Opera Gallery. 2015.

**OPP.44:135**; PP.44:060; Z.XIII:268





**Nature morte.** Paris. May/1944. Oil on canvas [OiC]. S/U. Private collection.

**OPP.44:186**; PP.44:082; Z.XIII:287

---

**Tête de femme.** Paris. 4-May/1944. Oil on canvas. [32 x 22] [35 x 22] 35,3 x 21,9 cm. Mildred Lane Kemper Art Museum (Washington University, St. Louis). (Inv WU 3942). Gift of Mr. and Mrs. Marcus Rice, 1961.

**OPP.44:097**; PP.44:062; Z.XIII:259; BS.55:178; RP.60\*:177





**Tête de femme.** Paris. 4-May/1944. Oil on canvas [OïC]. 33 x 24 cm. Private collection.

**OPP.44:174**; PP.44:063; Z.XIII:260

---

**Tête de femme.** Paris. 4-May/1944. Oil on canvas [OïC]. 35 x 27 cm. Private collection.

**OPP.44:177**; PP.44:064; Z.XIII:267





**Tête de femme.** Paris. 4-May/1944. Oil on canvas [Oic]. 35 x 22 cm. Private collection.

**OPP.44:188**; PP.44:065; Z.XIII:292

---

**Buste de femme.** Paris. 4-May/1944. Oil on canvas [Oic]. 33 x 24 cm. Private collection.

**OPP.44:189**; PP.44:066; Z.XIII:293





**Buste de femme.** Paris. 4-May/1944. Oil on canvas [OIC]. 33 x 24 cm. Private collection.

**OPP.44:190**; PP.44:067; Z.XIII:294

---

**Buste de jeune femme.** Paris. 5-May/1944. Oil on canvas. 65 x 50 cm. E and R Cyzer 20th Century Art. Jody Klotz Fine Art and Damien Boquet Art.

**OPP.44:080**; PP.44:068; Z.XIII:269





**Femme se lavant le pied.** Paris. 6-May/1944. Graphite with incised line on cream woven paper. 50,7 x 38,6 cm. The Art Institute of Chicago. (Inv 1955.603). Gift from the Estate of Curt Valentin.

**OPP.44:003**; PP.44:070; Z.XIII:291; AB.57\*:90p; BS.55:312p; CH.66a\*:96; CH.68a\*:96; CH.73\*:6; CH.87\*:n/a; CP.72\*:n/a; CP.72\*:n/a; EM.55:221p; FW.67\*:201; FW.67\*:201; GG.86\*:n/a; GT.81\*:89; IC.05:168p; JL.67b:78p; JL.71:70p; LU.93:272; NY.50e\*:71; NY.50e\*:71; NY.52a\*:34; NY.63b\*:156; NY.63b\*:156; NY.95a\*:80; PH.58\*:213; RP.67b\*:254; SD.13a\*:173; SN.98\*:76; ST.88\*:205; ST.88\*:205; TG.88:57; TO.64\*:236; TO.64\*:236; TU.86\*:189; WC.62\*:11; WW.91:458p

**Femmes et enfant.** Paris. 6-May/1944. Oil on canvas [OïC]. 33 x 22 cm. Private collection.

**OPP.44:175**; PP.44:069; Z.XIII:261





**Études.** Paris. 7-May/1944. Graphite on paper. 27 x 50,5 cm. Private collection.

**OPP.44:187**; PP.44:071; Z.XIII:290

---

**Nu debout.** Paris. 9-May/1944. Gouache [OïC]. 65 x 50 cm. Private collection.

**OPP.44:198**; PP.44:073; Z.XIII:312





**Nu assis.** Paris. 9-May/1944. Watercolor [Oic]. 65 x 50 cm. Private collection. Formerly Christie's. #124, 05/24/90.

**OPP.44:253**; PP.44:072

---

**Femme assise.** Paris. [12-May~7-June]/1944. Oil on canvas [Oic] [First stage of *Femme assise dans un fauteuil d'osier*]. 100 x 81 cm. Private collection.

**OPP.44:106**; PP.44:084; Z.XIII:326







**Femme dans un fauteuil en osier.** Paris. [12-May~7-June]/1944. Oil on canvas [OIC] [Second stage of *Femme assise dans un fauteuil d'osier*]. 100 x 81 cm. Private collection.

**OPP.44:089**; PP.44:085; Z.XIII:327

---

**Notre-Dame.** Paris. 17-May/1944. Oil on canvas. 22 x 33 cm. Private collection.

**OPP.44:015**; PP.44:074; Z.XIII:296;  
GL.84\*:28; TO.04\*:73; TO.99\*:82





**Femme assise.** Paris. 17-May~7-June/1944. Oil on canvas [OIC]. 92 x 60 cm. Private collection.

**OPP.44:192**; PP.44:083; Z.XIII:301

---

**Notre-Dame.** Paris. 18-May/1944. Oil on canvas. 19 x 33 cm. Private collection.

**OPP.44:016**; PP.44:075; Z.XIII:300;  
TO.04\*:74; TO.99\*:83





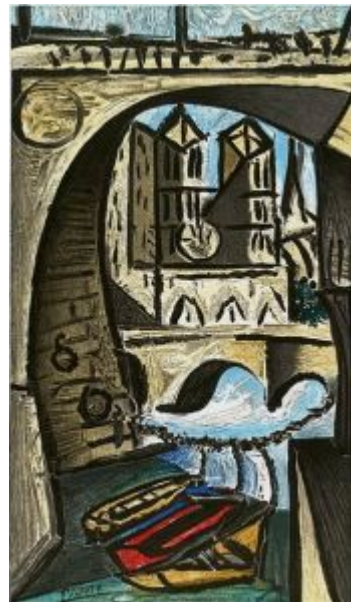
**Notre Dame.** Paris. 19-May/1944. Oil on canvas [OiC]. 33 x 19 cm. Private collection.

**OPP.44:191**; PP.44:076; Z.XIII:299

---

**Notre-Dame.** Paris. 21-May/1944. Oil on canvas. 33 x 19 cm. Private collection.

**OPP.44:090**; PP.44:077; Z.XIII:297; HJ.46:42





**Notre-Dame.** Paris. 22-May/1944. Oil on paper laid on canvas. 50,5 x 32,5 cm. Sotheby's. #52, L04002, 02/03/04. Formerly Marina Picasso Collection. (Inv 4577).

**OPP.44:017**; PP.44:078; Z.XIII:298; GE.98b\*:2; GS.85\*:90; JR.93\*:74; LU.93:239; PA.00e\*:n/a; PF.10\*:6; TK.86\*:PC-20; TO.99\*:84

---

**Nu debout.** Paris. 26-May/1944. Pencil on paper. [50 x 32,5] 51 x 33 cm. Fundación Almine & Bernard Ruiz-Picasso para el Arte.

**OPP.44:066**; PP.44:080; Z.XIII:271; GS.03:2.33





**Nu debout II.** Paris. 26-May/1944. Pencil on paper. 50,8 x 32,8 cm. Private Collection, New York. Formerly Christie's. #287, 11790, 02/03/16; Christie's. #136, 10379, 06/24/15.

**OPP.44:134**; PP.44:081; Z.XIII:272

---

**Nu assis.** Paris. [June]/1944. Blue crayon on paper. 50,2 x 32,5 cm. Galerie Thomas, München. 2009.

**OPP.44:091**



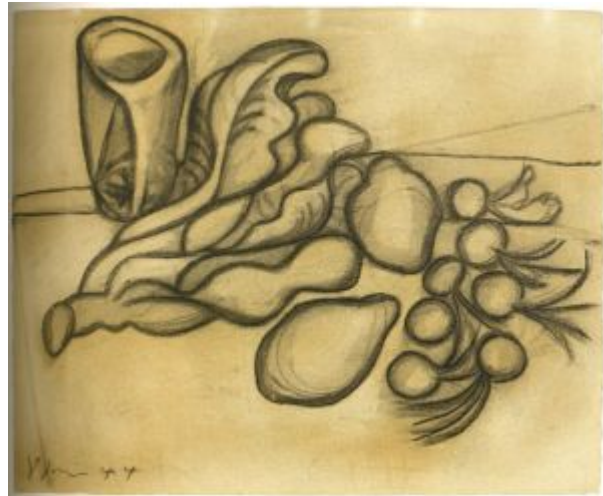


**Femme assise dans un fauteuil d'osier.** Paris. [24-September/1943] [2-May~7-June/1944. Oil on canvas. 100 x 81 cm. Private collection.

**OPP.44:236**; PP.44:086; Z.XIII:328; AB.46:235p; BS.55:173; HJ.46:81; JL.51:96; NY.48e\*:7; PA.45b\*:n/a; UP.00:871; WR.96:407p

**Nature morte.** Paris. 8-June/1944. Charcoal, smudging & wash on paper. 50,5 x 65,5 cm. Musée Picasso, Paris. Dation 1979.

**OPP.44:081**; MPP:1329; EH.96:121p; GB.19\*:139; PD.06\*:n/a





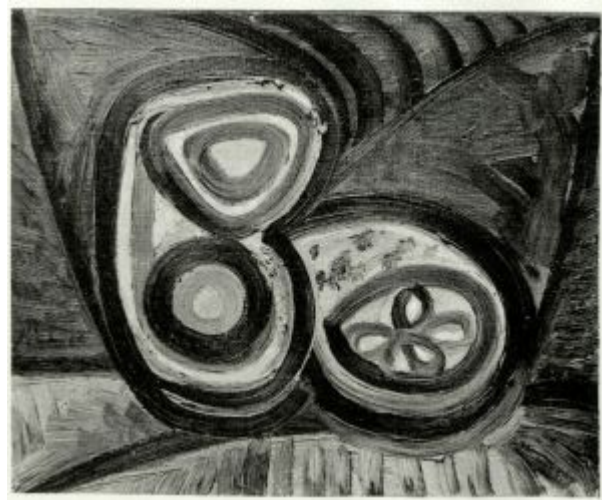
**Nature morte à la bouteille.** Paris. 8-June/1944.  
Oil on canvas [OiC]. 41 x 27 cm. Private collection.

**OPP.44:179**; PP.44:087; Z.XIII:275

---

**Verre et citron.** Paris. 10-June/1944. Oil  
on canvas [OiC]. 27 x 22 cm. Private  
collection.

**OPP.44:181**; PP.44:088; Z.XIII:278





**Verre et citron.** Paris. 10-June/1944. Oil on canvas [OiC]. 27 x 22 cm. Private collection.

**OPP.44:182**; PP.44:089; Z.XIII:279

---

**Femme nue assise.** Paris. 14-June/1944. Pencil on paper. 50,4 x 33 cm. Bonhams. #20, 18861, 06/21/11. Formerly Sotheby's. #172, N08315, 05/09/07.

**OPP.44:069**; PP.44:093; Z.XIII:311







**Nu.** Paris. 14-June/1944. Pencil. 50,5 x 32,5 cm. Private collection.

**OPP.44:109**; PP.44:091; Z.XIII:309; FP.73:270p

---

**Nu.** Paris. 14-June/1944. Graphite on paper. 50,5 x 32,5 cm.  
Private collection.

**OPP.44:196**; PP.44:090; Z.XIII:308





**Nu.** Paris. 14-June/1944. Graphite on paper. 50 x 32,5 cm. Private collection.

**OPP.44:197**; PP.44:092; Z.XIII:310

---

**Femme nue debout, vue de face.** Paris. 15-June/1944. Charcoal on paper. 65,6 x 50,7 cm. Christie's. #241, 7832, 02/03/10.

**OPP.44:096**; BS.84c\*:66; JL.66\*:132





**Nu.** Paris. 15-June/1944. Graphite on paper. 50 x 32,5 cm. Private collection.

---

**OPP.44:194**; PP.44:094; Z.XIII:306

---

**Nu.** Paris. 15-June/1944. Graphite on paper. 50 x 32 cm. Private collection.

---

**OPP.44:195**; PP.44:095; Z.XIII:307





**Mots pense-bête sur une enveloppe de la BNCI.** Paris. [Mid-June/1944]. Pencil & ink on envelope [Obverse]. S/U. Musée Picasso, Paris.

**OPP.44:232**

**Mots pense-bête sur une enveloppe de la BNCI.** Paris. [Mid-June/1944]. Pencil & ink on envelope [Reverse]. S/U. Musée Picasso, Paris.

**OPP.44:233**





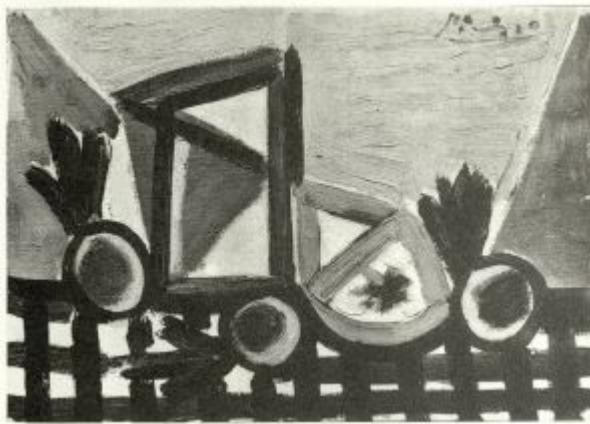
**Verre et citron.** Paris. 16-June/1944. Oil on canvas. 19 x 27 cm. Private collection.

**OPP.44:132**; PP.44:096; Z.XIII:285; LP.99:190-191p

**Verre et radis.** Paris. 16-June/1944. Oil on canvas [OïC]. 27 x 19 cm. Private collection.

**OPP.44:180**; PP.44:097; Z.XIII:276





**Verre et radis.** Paris. 16-June/1944. Oil on canvas [OiC]. 27 x 19 cm. Private collection.

**OPP.44:185**; PP.44:098; Z.XIII:283

---

**Verre et radis IV.** Paris. 18-June/1944. Oil on canvas. [19 x 27] [19 x 29] 19 x 27,2 cm. Galerie Gmurzynska, Zurich. 2015. Formerly Christie's. #1, 10334, 06/23/15.

**OPP.44:115**; PP.44:099; Z.XIII:277; JB.92:25p





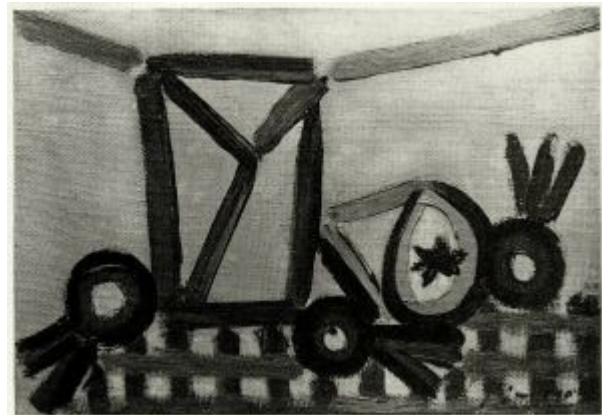
**Nature morte aux radis.** Paris. 18-June/1944. Oil on canvas. 19 x 27 cm. Musée des Beaux-Arts et d'Archéologie, Besançon. (Inv DA.970.1.87). On deposit from Musée National d'Art Moderne, Centre Georges Pompidou, Paris. (Inv AM 4224 P (546). Donation Adèle et George Besson, 1963.

**OPP.44:124**; PP.44:102; Z.XIII:282;  
BA.18\*:241p; GB.19\*:135

---

**Verre et radis.** Paris. 18-June/1944. Oil on canvas [OiC]. 27 x 19 cm. Private collection.

**OPP.44:183**; PP.44:100; Z.XIII:280





**Verre et citron.** Paris. 18~22-June/1944. Oil on canvas. [22 x 27] 19,2 x 27,1 cm. Sotheby's. #335, N11105, 11/15/22. Formerly Christie's. #364, 17156, 05/14/19.

**OPP.44:184**; PP.44:101; Z.XIII:281

---

**Verre et fruits.** Paris. 20-June/1944. Oil on canvas. 38,7 x 46,4 cm. Private collection. Formerly Sotheby's. #53, N07934, 11/05/03.

**OPP.44:024**; PP.44:104; Z.XIII:284; HO.68\*:n/a





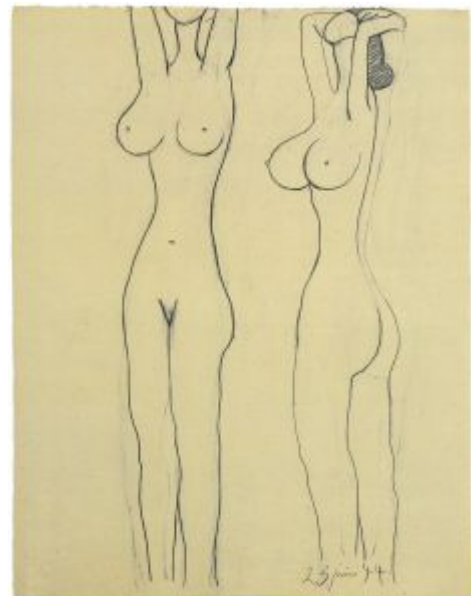


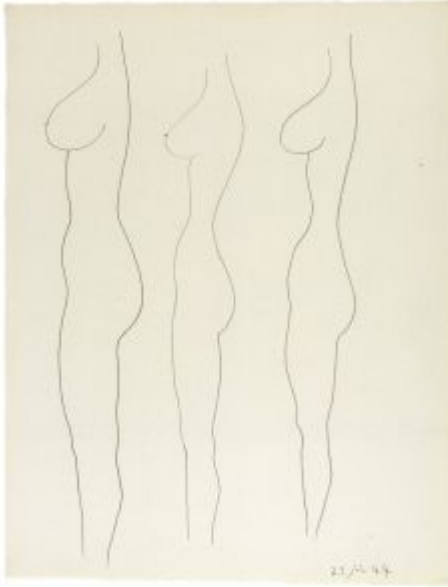
**Verre et fruits.** Paris. 20-June/1944. Oil on canvas [OIC]. 55 x 38 cm. Private collection.

**OPP.44:178**; PP.44:103; Z.XIII:274

**Deux nus.** Paris. 23-June/1944. Pencil on paper. [65 x 50] 66 x 50,5 cm. Fundación Almine & Bernard Ruiz-Picasso para el Arte.

**OPP.44:067**; PP.44:106; Z.XIII:321; GS.03:2.34





**Trois profils de femme debout nue.** Paris. 23-June/1944.  
Graphite on paper. 66 x 51 cm. Private collection.

**OPP.44:143**; PP.44:105; Z.XIII:320; HO.16a\*:116p

---

**Nu de dos.** Paris. 26-June/1944. Pen on front page of  
Honoré de Balzac, *Le Chef-d'œuvre Inconnu*. 33,2 x 25,8  
cm. Sotheby's. #143, PF1223, 03/28/12.

**OPP.44:117**



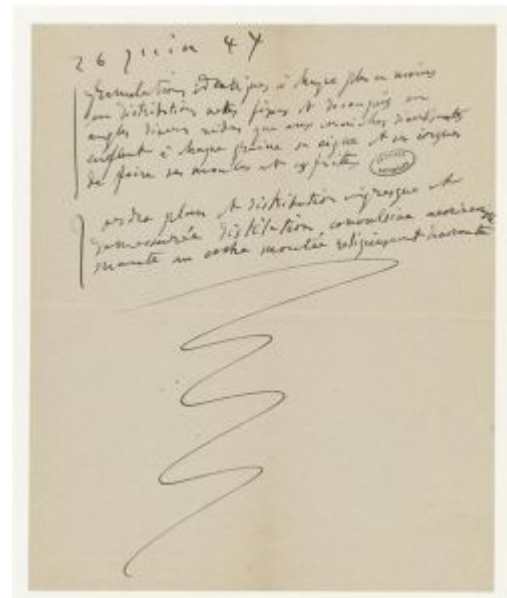


**Colombe.** Paris. 26-June/1944. Wash. 36 x 27 cm. Private collection.

**OPP.44:199**; PP.44:107; Z.XIII:313

**granulations identiques ....** Paris. 26-June/1944.  
Black ink on paper. 25,6 x 21 cm. Musée Picasso,  
Paris. Formerly Dora Maar Collection.

**OPP.44:240**; MPP:1998.422r





**Nu debout.** Paris. 27-June/1944. Oil on canvas [OiC]. 41 x 33 cm. Private collection.

**OPP.44:193**; PP.44:108; Z.XIII:305

---

**Verre et vase de fleurs.** Paris. July/1944. Oil on canvas [OiC]. 33 x 46 cm. Private collection.

**OPP.44:213**; PP.44:136; Z.XIV:17





**Vase de fleurs et pichet.** Paris. July/1944. Oil on canvas [OïC].  
33 x 46 cm. Private collection.

**OPP.44:214**; PP.44:137; Z.XIV:18

---

**Femme nue aux bras levés.** Paris. 4-  
July/1944. India ink on paper. 33 x 50,5  
cm. Private collection.

**OPP.44:086**; PP.44:109; Z.XIII:322;  
GL.89\*:13





**Nus debout.** Paris. 4-July/1944. India ink on paper. 50 x 32,5 cm.  
Private collection.

**OPP.44:162**; PP.44:110; Z.XIII:324

**Nus et femme se lavant les pieds.** Paris.  
6~8-July/1944. India ink, wash & graphite  
pencil on paper. [32,5 x 50] 33 x 50,5 cm.  
Musée Picasso, Paris. Dation 1979.

**OPP.44:095**; MPP:1330; PP.44:111;  
Z.XIII:325; GB.19\*:140





**Femme se lavant.** Paris. 9-July/1944. India ink on paper. 50 x 32,5 cm. Private collection.

**OPP.44:202**; PP.44:112; Z.XIII:316

---

**Femme se lavant le pied.** Paris. 10-July/1944. Ink on paper. [55 x 33] 50,8 x 33,6 cm. The Museum of Modern Art, NYC. (Inv 186.1953). Purchase, 1953.

**OPP.44:085**; PP.44:115; Z.XIII:323; CK.10\*:224; WR.72\*:163p





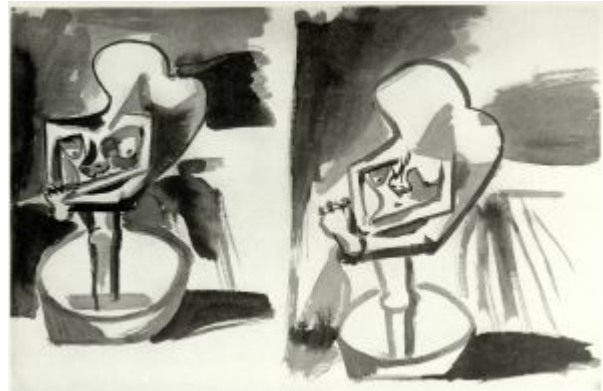
**Femme se lavant.** Paris. 10-July/1944. India ink on paper. 55 x 32,5 cm. Private collection.

**OPP.44:201**; PP.44:114; Z.XIII:319

---

**Femme se lavant.** Paris. 10-July/1944. India ink on paper. 55 x 32,5 cm. Private collection.

**OPP.44:204**; PP.44:113; Z.XIII:318







**Verre et pichet.** Paris. 14~23-July/1944. Oil on canvas. 33 x 41,5 cm. Sotheby's. #15, L19002, 02/26/19. Formerly Sotheby's. #11, N09219, 11/04/14; Christie's. #0071, 1900, 11/06/07; Private Collection, NY.

**OPP.44:005**; Z.XIV:5; BS.67a\*:26; WW.91:462p

**Nature morte à la cruche et au verre.** Paris. 19-July/1944. Oil on canvas. 55 x 46 cm. Museo Picasso, Málaga. On temporary loan from Fundación Almine & Bernard Ruiz-Picasso para el Arte.

**OPP.44:065**; PP.44:116; Z.XIII:315; DP.20\*:122; JR.12\*:41p; MG.03b\*:46; MI.01\*:115; PA.44a\*:n/a





**Verre et pichet.** Paris. 20-July/1944. Oil on canvas [OiC]. 46 x 38 cm. Private collection.

**OPP.44:200**; PP.44:117; Z.XIII:314

---

**Verre et pichet.** Paris. 20-July/1944. Oil on canvas [OiC]. 33 x 41 cm. Private collection.

**OPP.44:206**; PP.44:118; Z.XIV:4; DP.20:292p





**Verre et pichet II.** Paris. 21-July/1944. Oil on canvas. 38,1 x 54,9 cm. Christie's. #0049, 1831, 05/09/07.

**OPP.44:070**; PP.44:119; Z.XIV:2

---

**Verre et pichet.** Paris. 21-July/1944. Oil on canvas. 38,2 x 55 cm. Christie's. #35, 3567, 12/03/13.

**OPP.44:125**; PP.44:120; Z.XIV:3;  
DP.20:292p; PA.44a\*:61p





**Nature morte pot, verre et orange.** Paris. 23-July/1944. Oil on canvas. 33 x 41 cm. Musée d'Art Moderne de Saint-Étienne-Métropole. (Inv 44.2.1). Don de l'artiste au musée d'art moderne de Saint-Étienne.

**OPP.44:121**; PP.44:121; Z.XIII:289; CE.04\*:12; DP.20:292p; GB.19\*:136; PA.44a\*:n/a; SE.10\*:n/a; SE.12\*:n/a; SG.88\*:33

---

**Verre et pichet.** Paris. 23-July/1944. Oil on canvas [OiC]. 33 x 41 cm. Private collection.

**OPP.44:208**; PP.44:122; Z.XIV:8





**Verre et pichet.** Paris. 24-July/1944. Oil on canvas. 33 x 41 cm. Sotheby's. #114, PF2306, 04/19/23.

**OPP.44:013**; PP.44:126; Z.XIV:11; BA.76\*:26p; FC.00\*:84; MA.75b\*:35p

---

**Nature morte.** Paris. 24-July/1944. Oil on canvas. 33 x 41,3 cm. Auckland Art Gallery Toi o Tamaki, New Zealand. (Inv L1999/15 ). On loan from the Thanksgiving Foundation.

**OPP.44:092**; PP.44:124; Z.XIV:9; DK.61\*:33





**Verre et pichet.** Paris. 24-July/1944. Oil on canvas. 33 x 41 cm. Sprengel Museum, Hannover.

**OPP.44:139**; PP.44:125; Z.XIV:10

---

**Verre, citron et pichet.** Paris. 25-July/1944. Oil on canvas. 27,5 x 34,5 cm. Musée National d'Art Moderne, Centre Georges Pompidou, Paris. (Inv AM.4493P). Donation Marguerite Savary, 1969.

**OPP.44:060**; PP.44:127; Z.XIV:6; BA.18\*:240p





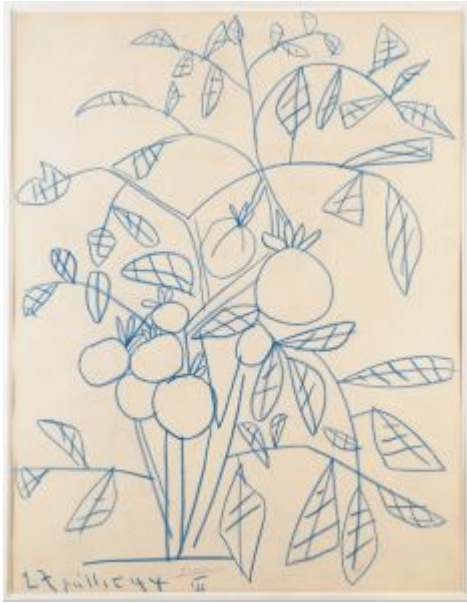
**Verre et pichet.** Paris. 26-July/1944. Oil on canvas. 27,2 x 35,2 cm. Sprengel Museum, Hannover.

**OPP.44:082**; PP.44:128; Z.XIV:7; MS.24\*:16; SG.88\*:32

**Plant de tomate.** Paris. 27-July/1944. Blue conté crayon on paper. 65 x 50 cm. Sotheby's. #58, N08022, 11/04/04.

**OPP.44:029**; PP.44:129; Z.XIV:13; YB.99\*:160





**Plant de tomate.** Paris. 27-July/1944. Blue conté crayon on paper. 66 x 50,5 cm. Museum Ludwig, Köln. (Inv ML/Z 2001/057). Schenkung 2001. Formerly Galerie Beyeler, Basel.

**OPP.44:108**; PP.44:131; Z.XIV:15; JB.92:286p; LU.93:248; WO.92\*:54; YB.99\*:161



**Plant de tomate.** Paris. 27-July/1944. Conté pencil on paper. 66 x 50,5 cm. Marina Picasso Collection. (Inv 4607). Courtesy Galerie Jan Krugier, Geneva.

**OPP.44:128**; PP.44:132; Z.XIV:16; YB.99\*:162





**Plant de tomate.** Paris. 27-July/1944. Blue Conté pencil on paper [OïC]. 65 x 50 cm. Private collection.

**OPP.44:211**; PP.44:130; Z.XIV:14

---

**Tête de femme (Françoise).** Paris. 28-July/1944. Charcoal on paper. 65 x 50 cm. Private collection.

**OPP.44:087**; PP.44:134; Z.XIV:36; WR.96:413p





**Verre et pichet.** Paris. 28-July/1944. Oil on paper [OiC]. S/U. Private collection.

**OPP.44:210**; PP.44:133; Z.XIV:12

**Verre et vase de fleurs sur une table.** Paris. 30-July/1944. Oil on canvas [OiC]. 55 x 41 cm. Private collection.

**OPP.44:205**; PP.44:135; Z.XIV:1





**Nature morte au bouquet.** Paris. 31-July/1944. Oil on canvas. 46 x 37,5 [38] cm. Musée National d'Art Moderne, Centre Georges Pompidou, Paris. (Inv AM.4499P). Donation Marguerite Savary 1969.

**OPP.44:061**; PP.44:138; Z.XIV:20; GB.14\*:75;  
PA.44a\*:n/a

**Verre et vase de fleurs.** Paris. 1-August/1944. Oil on canvas. 27 x 35 cm. Artcurial. #16, 2814, 12/07/15.

**OPP.44:045**; PP.44:139; Z.XIV:19





**Carafe et plant de tomate.** Paris. 3-August/1944. Oil on canvas. [73] 73,6 x 92 cm. Sotheby's. #54, L04007, 06/21/04. Formerly Mr. Edgar M. Bronfman Collection, NY.

**OPP.44:027**; PP.44:140; Z.XIV:23; AB.57\*:n/a; BS.55:257p; HJ.46:31; JR.62\*:6.10; MI.53\*:108; MJ.55\*:108; MU.55\*:98; SF.61b\*:n/a; WC.62\*:15

---

**Plant de tomate.** Paris. 4-August/1944. Oil on canvas [OIC] [Earlier version of *Plant de tomate*]. 73 x 91,5 [92] cm. Private collection. Formerly Christie's. #531, 9224, 11/09/99; Christie's. #83, 11/14/89; Mr. and Mrs. Tom May Collection.

**OPP.44:046**; PP.44:141; Z.XIV:29; AB.46:237p; DK.61\*:34





**Plant de tomate (1ère ébauche)**. Paris. 6-August/1944. Oil on canvas [OiC] [First stage of *Plant de tomate*]. 73 x 92 cm. Private collection.

**OPP.44:047**; PP.44:142; Z.XIV:24



**Plant de tomate (2ème ébauche)**. Paris. 6~9-August/1944. Oil on canvas [Second stage of *Plant de tomate*]. 73 x 92 cm. Private collection.

**OPP.44:049**; PP.44:144; Z.XIV:27



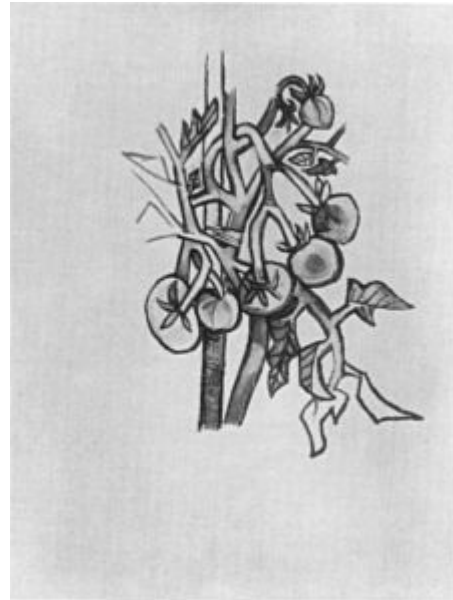
**Carafe et plant de tomate.** Paris. [12] 7-August/1944. Oil on canvas [Finished stage of *Plant de tomate (1ère ébauche)*]. 71,8 x 91 cm. Sotheby's. #29, N08898, 11/05/12. Formerly Sotheby's. #27, N07989, 05/05/04.

**OPP.44:026**; PP.44:148; Z.XIV:22; JB.92:286p; JL.51:97; LO.60b\*:44; LU.93:249; ML.57a\*:106; NH.56\*:144; NY.51i\*:n/a; NY.55f\*:15; NY.57h\*:43; NY.76e\*:n/a; OW.13:135p; PA.45b\*:17; PA.45b\*:n/a; WA.83\*:64

---

**Plant de tomate (1ère ébauche).** Paris. 7-August/1944. Oil on canvas [OiC] [First stage of *Carafe et plant de tomate*]. 71,8 x 91 cm. Private collection.

**OPP.44:048**; PP.44:143; Z.XIV:21





**Plant de tomate.** Paris. [6~] 9-August/1944. Oil on canvas [Finished stage of *Plant de tomate (2ème ébauche)*]. 73 x 92 cm. Sotheby's. #8, L17002, 03/01/17. Formerly Lefevre Fine Art Limited. 2015.

**OPP.44:050**; PP.44:145; Z.XIV:25; GB.19:240p; HJ.46:29; MC.92:68; NH.60\*:93; NY.47b\*:n/a

**Plant de tomate.** Paris. [12] 10-August/1944. Oil on canvas. 92 x 73 cm. Christie's. #7, 1722, 11/08/06. Formerly Galerie Rosengart; Mr. & Mrs. Vladimir Golschmann Collection, NY;.

**OPP.44:006**; PP.44:146; Z.XIV:26; BB.68\*:1; BS.55:182; BS.55:182; GP.96:249p; HJ.46:28; JB.92\*:117; JR.62\*:6.9; KG.71:23; KG.85:23; KZ.98\*:103; LC.66\*:4; LC.88\*:70; LU.93:277p; NY.48e\*:4; PA.45b\*:18; PA.45b\*:n/a; SL.52\*:21; UP.00:873; WS.11:232p; WS.93\*:87; WW.91:463p





**Dessin à la manière de Joan Miró.** Paris. 11-  
August/1944. India ink on paper tablecloth. S/U.  
Private collection.

**OPP.44:257**; BA.23:199p

**Plant de tomate.** Paris. [4~] 12-  
August/1944. Oil on canvas [Later version  
of *Plant de tomate*]. 73 x 91,5 [92] cm.  
Heidi Horten Collection, Vienna. Formerly  
Christie's. #531, 9224, 11/09/99;  
Christie's. #83, 11/14/89; Mr. and Mrs.  
Tom May Collection.

**OPP.44:051**; PP.44:147; Z.XIV:28;  
DK.61\*:34; HJ.46:30







**L'étéinte II.** Paris. 12-August/1944. India ink on paper. 50,5 x 66 cm. Private collection, Paris.

**OPP.44:098**; JC.01a\*:195

---

**L'étéinte III.** Paris. 12-August/1944. India ink on paper. 50,5 x 66 cm. Private collection, Paris.

**OPP.44:099**; JC.01a\*:196





**L'etreinte IV.** Paris. 12-August/1944. India ink on paper. 50,5 x 66 cm. Private collection, Paris.

**OPP.44:100**; JC.01a\*:197

---

**L'etreinte V.** Paris. 12-August/1944. India ink on paper. 50,5 x 66 cm. Private collection, Paris.

**OPP.44:101**; JC.01a\*:198





**L'etrenite VI.** Paris. 12-August/1944. India ink on paper. 50,5 x 66 cm. Private collection, Paris.

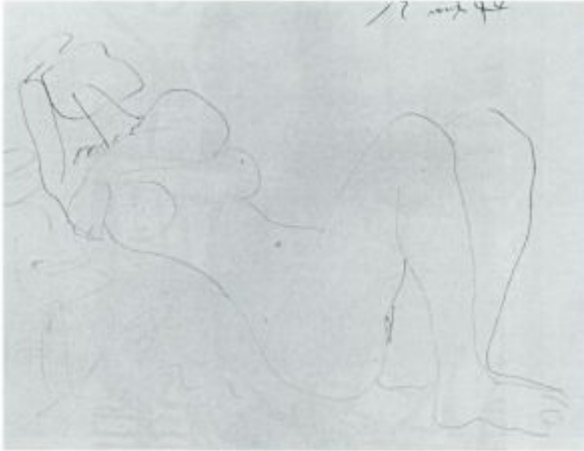
**OPP.44:102**; JC.01a\*:199

---

**L'etrenite VII.** Paris. 12-August/1944. India ink on paper. 50,5 x 66 cm. Private collection, Paris.

**OPP.44:103**; JC.01a\*:199a





**Nu au collier.** Paris. 12-August/1944. Pen & ink on paper. 50,5 x 66 cm. Private collection. Formerly Sotheby's. #72, 03/25/92.

**OPP.44:254**; PP.44:149

---

**Jeune homme, profil gauche.** Paris. [14] 13-August/1944. India ink on paper. 50 x 32,5 cm. Sotheby's. #31, N08125, 11/02/05. Formerly Marina Picasso Collection. (Inv 04524).

**OPP.44:054**; PP.44:151; Z.XIV:33; GU.00:23; MA.22b\*:172; MB.84\*:141; MP.81\*:227; MP.83\*:295; PD.02\*:83; UP.00:875; WC.62\*:13; WW.91:459p





**Tête de garçon.** Paris. 13~15-August/1944. Brush, black ink & gray wash, with scraping on ivory wove paper. 50 x 28,8 cm. The Art Institute of Chicago. (Inv 2012.569). Bequest of Florene M. Schoenborn. Formerly Florene M. Schoenborn and Samuel A. Marx Collection, Chicago.

**OPP.44:094**; PP.44:153; Z.XIV:31; AB.57\*:90p; AB.65\*:27p; CH.68a\*:95; JL.67b:77p; NY.51j\*:n/a; NY.90e\*:n/a; PH.58\*:217; RT.58\*:222; SD.13a\*:174

---

**Profil gauche.** Paris. 14-August/1944. [Charcoal] India ink on paper. 50 x 32,5 cm. Marina Picasso Collection. (Inv 04523). Courtesy Galerie Jan Krugier, Geneva.

**OPP.44:126**; PP.44:152; Z.XIV:37; MP.81\*:226; SG.88\*:58





**Tête de jeune garçon.** Paris. 14-August/1944. India ink on paper. 50 x 32 cm. Private collection.

**OPP.44:144**; PP.44:150; Z.XIV:30

---

**Nature morte.** Paris. 16-August/1944. Oil on canvas. 81 x 100 cm. Museo Nacional Centro de Arte Reina Sofia, Madrid. (Inv AS.08116).

**OPP.44:058**; GP.96:256p





**Portrait de Maya.** Paris. 21-August/1944. India ink & watercolor on paper. 30,5 x 40,5 cm. Maya Widmaier Picasso Collection, Paris.

**OPP.44:129**; PP.44:158; Z.XIV:39; AB.46:242p; HJ.46:100

---

**Portrait de femme (Marie-Thérèse).** Paris. 22-August/1944. [India ink & gouache] Watercolor on paper. 40,5 x 30,5 cm. Museum Ludwig, Köln. (Inv ML/Z 2001/059). Schenkung 2001.

**OPP.44:010**; PP.44:157; Z.XIV:38; AB.46:242p; MD.02\*:189p; WO.92\*:59





**Bacchanale: Le triomphe de Pan (d'après Poussin) (Étude)**. Paris. 23-August/1944. Ink on paper. 30,5 x 40,5 cm. Private collection.

**OPP.44:116**; PP.44:154; Z.XIV:34; MG.85:503; SG.96:4.1

---

**Bacchanale: Le triomphe de Pan (d'après Poussin)**. Paris. 24~28 [29]-August/1944. Watercolor & gouache on paper. 30,5 x 40,5 cm. Private collection, France.

**OPP.44:008**; PP.44:155; Z.XIV:35; AB.46:243p; AC.81:20p; BS.55:417p; DQ.74:191p; DW.05:79p; EC.02:621; GB.87:207; GU.00:22; HJ.46:99; HJ.83:30p; HJ.96:30p; JB.65:60; JB.96:90; JL.71:133p; JV.06:142p; KG.71:152; KG.85:152; LE.21\*:381; LU.93:304; MI.24\*:n/a; NC.10:52; PA.20j:221p; PE.01a:30p; RP.81:21.1; SG.06:8p; SG.88:30p; SG.96:4.2; SN.98:36p; TH.75:196; UP.00:874; VN.99:1; WR.96:410p; WS.93:38p







**Tête de jeune garçon.** Paris. 31-August/1944.  
India ink on paper. S/U. Private collection.

**OPP.44:215**; PP.44:156; Z.XIV:32

---

**Jeune homme de profil (Pour Georges Hugnet).** Paris. 6-September/1944. Ink wash & pen & India ink on frontispiece. 28,1 x 33,6 cm. Christie's. #72, 20661, 03/01/22.

**OPP.44:241**



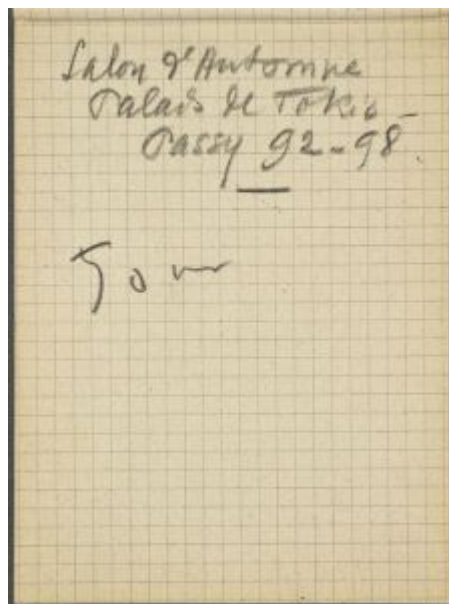


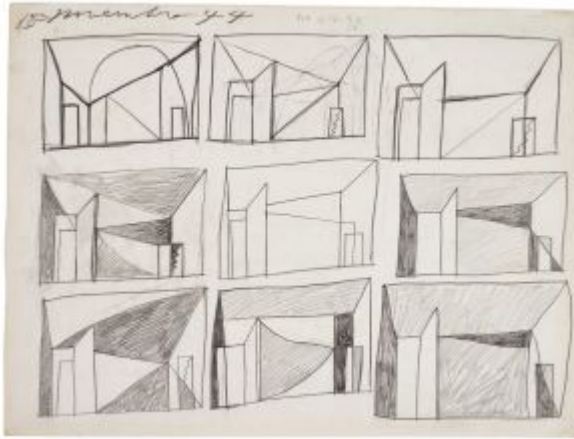
**Annotation.** Paris. Fall/1944. Ink on paper. S/U. Musée Picasso, Paris.

**OPP.44:136;** TU.15:191p

**Carnet de notes de Picasso portant l'inscription de la liste des sculptures exposées au Salon de la Libération.** Paris. [October]/1944. Graphite in squared paper. S/U. Musée Picasso, Paris. (Inv 515AP/E/13/3).

**OPP.44:234**





**Études de décor.** Paris. 1-November/1944. Pencil on paper [Reverse of *Décors, plans, drapeau républicain espagnole/français*]. [30,5 x 40] 30,3 x 40,5 cm. Sotheby's. #129, L20005, 02/19/20. Formerly Marina Picasso Collection.

**OPP.44:209**; PP.44:161; Z.XIV:58

**Décors, plans, drapeau républicain espagnole/français.** Paris. 1-November/1944. Gouache & pencil on paper [Reverse of *Études de décor*]. [30,5 x 40] 30,3 x 40,5 cm. Sotheby's. #129, L20005, 02/19/20. Formerly Marina Picasso Collection.

**OPP.44:212**; PP.44:162; Z.XIV:56





**Décors, plans, drapeau république espagnole/française.** Paris. 1-November/1944. Watercolor & pencil on paper [Obverse of *Études de décor*]. [21 x 27] 30 x 40,5 cm. Sotheby's. #141, L20005, 02/19/20. Formerly Marina Picasso Collection.

**OPP.44:216**; PP.44:163; Z.XIV:55

**Études de décor.** Paris. 1-November/1944. Graphite on paper [Reverse of *Décors, plans, drapeau république espagnole/française*]. [30,5 x 40] 30 x 40,5 cm. Sotheby's. #141, L20005, 02/19/20. Formerly Marina Picasso Collection.

**OPP.44:217**; PP.44:160; Z.XIV:41





**Décors, plans, drapeau républicaine espagnole/française.** Paris. 5-November/1944. Gouache, watercolor & graphite on paper. 30,5 x 40,5 cm. Fundación Almine & Bernard Ruiz-Picasso para el Arte.

**OPP.44:238**; Ba.19c\*:120p

**Décors, plans, drapeau républicaine espagnole/française.** Paris. 5-November/1944. Gouache, watercolor & graphite on paper. 30,5 x 40,5 cm. Fundación Almine & Bernard Ruiz-Picasso para el Arte.

**OPP.44:239**; Ba.19c\*:120p



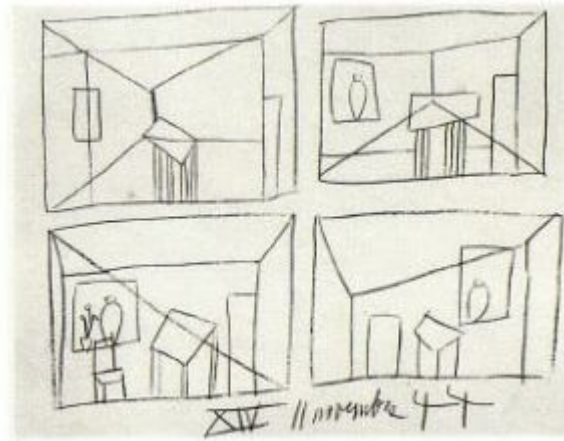


**sur les arbustes ... (1), en complées divinités ... (2), en divinités éparses ... (3).** Paris. 8~9-November/1944. Black pencil. S/U. Musée Picasso, Paris.

**OPP.44:084**; CW.89:428p

**Études XIV.** Paris. 11-November/1944. Color pencil on paper [Oic]. 21 x 27 cm. Private collection.

**OPP.44:170**; PP.44:174; Z.XIV:54



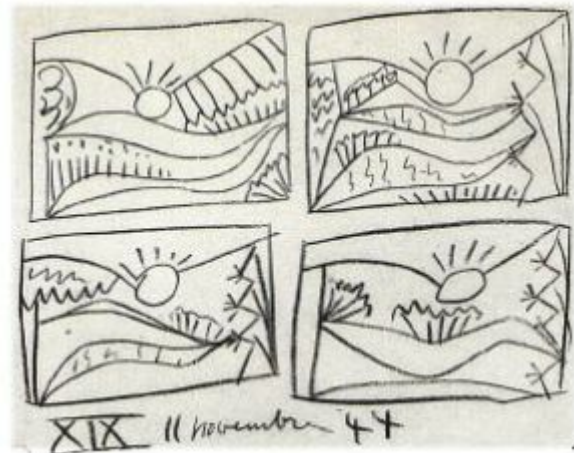


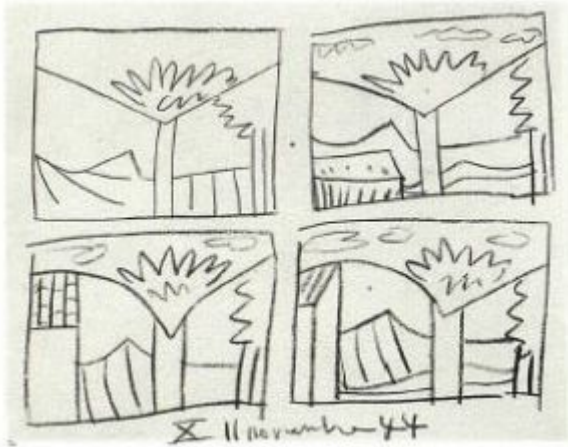
**Études XIII.** Paris. 11-November/1944. Color pencil on paper [Oic]. 21 x 27 cm. Private collection.

**OPP.44:207**; PP.44:173; Z.XIV:57

**Études XIX.** Paris. 11-November/1944. Color pencil on paper [Oic]. 21 x 27 cm. Private collection.

**OPP.44:218**; PP.44:176; Z.XIV:42



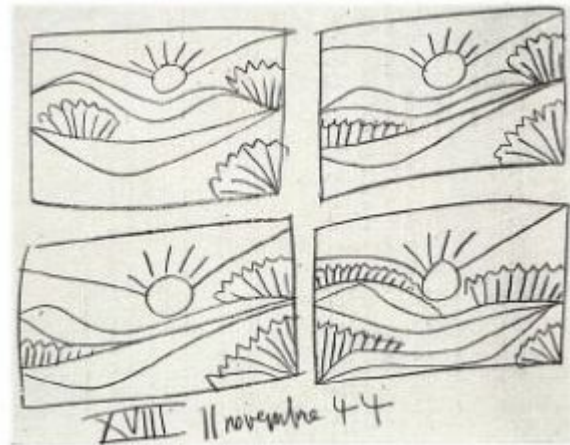


**Études X.** Paris. 11-November/1944. Color pencil on paper [Oic]. 21 x 27 cm. Private collection.

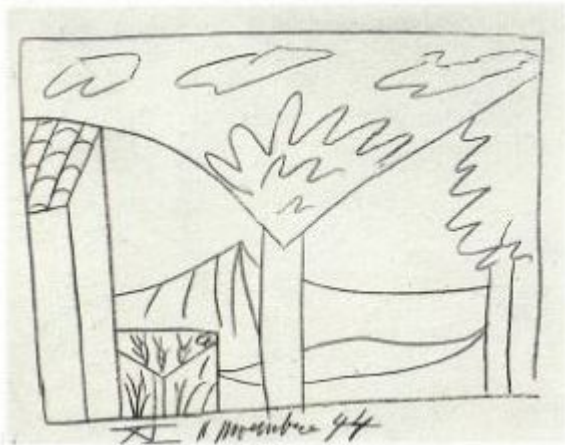
**OPP.44:219**; PP.44:169; Z.XIV:43

**Études XVIII.** Paris. 11-November/1944. Color pencil on paper [Oic]. 21 x 27 cm. Private collection.

**OPP.44:220**; PP.44:175; Z.XIV:44





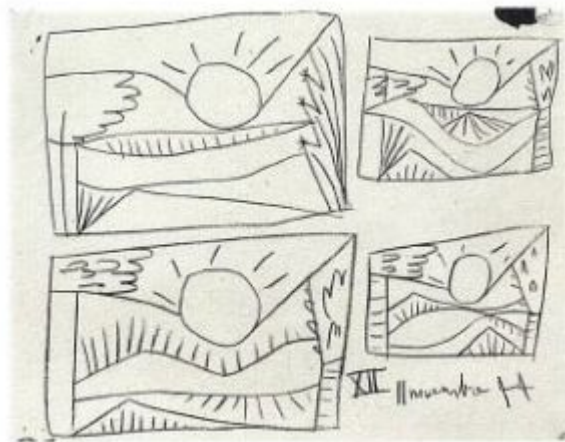


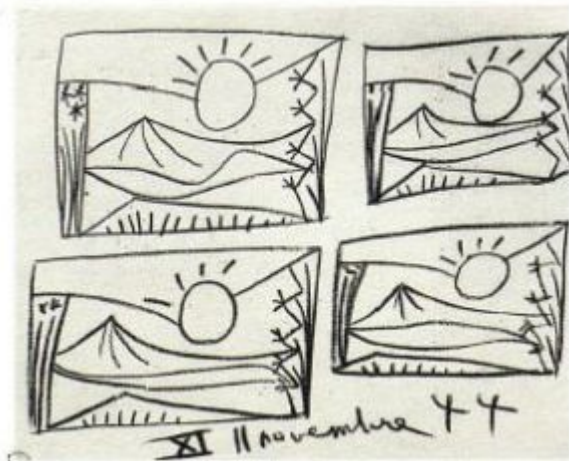
**Études XI.** Paris. 11-November/1944. Color pencil on paper [Oic]. 21 x 27 cm. Private collection.

**OPP.44:221**; PP.44:170; Z.XIV:45

**Études XII.** Paris. 11-November/1944. Color pencil on paper [Oic]. 21 x 27 cm. Private collection.

**OPP.44:222**; PP.44:172; Z.XIV:46



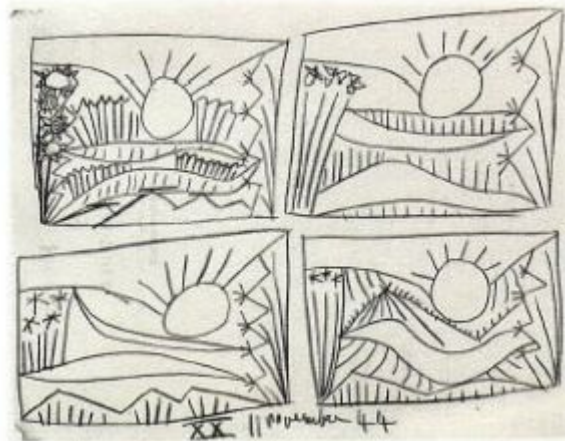


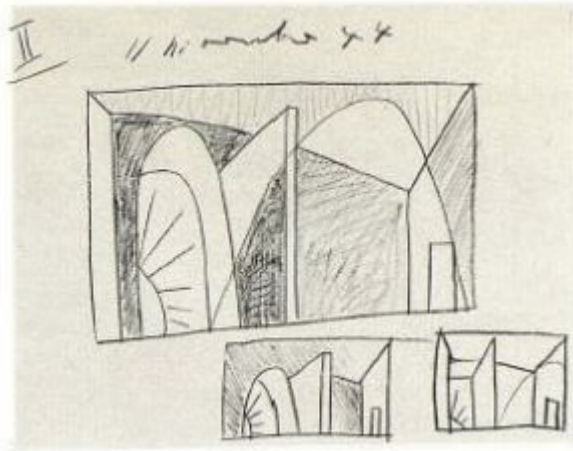
**Études XI.** Paris. 11-November/1944. Color pencil on paper [Oic]. 21 x 27 cm. Private collection.

**OPP.44:223**; PP.44:171; Z.XIV:47

**Études XX.** Paris. 11-November/1944. Color pencil on paper [Oic]. 21 x 27 cm. Private collection.

**OPP.44:224**; PP.44:177; Z.XIV:48



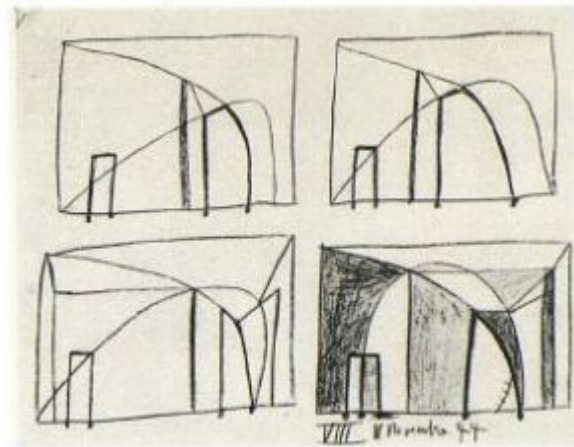


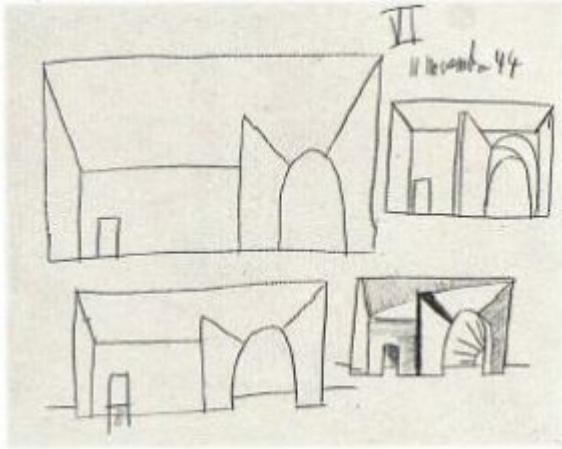
**Études II.** Paris. 11-November/1944. Color pencil on paper [Oic]. 21 x 27 cm. Private collection.

**OPP.44:225**; PP.44:164; Z.XIV:49

**Études VIII.** Paris. 11-November/1944. Color pencil on paper [Oic]. 21 x 27 cm. Private collection.

**OPP.44:226**; PP.44:167; Z.XIV:50



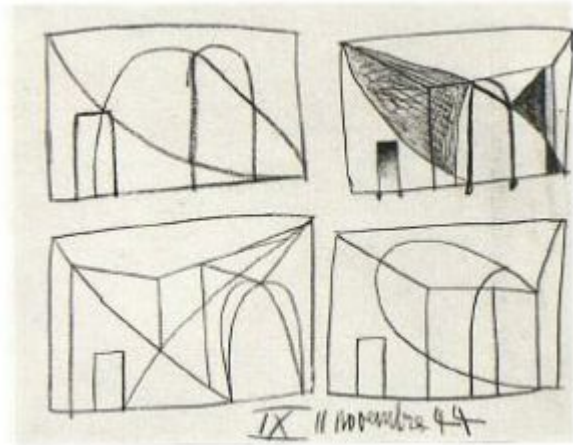


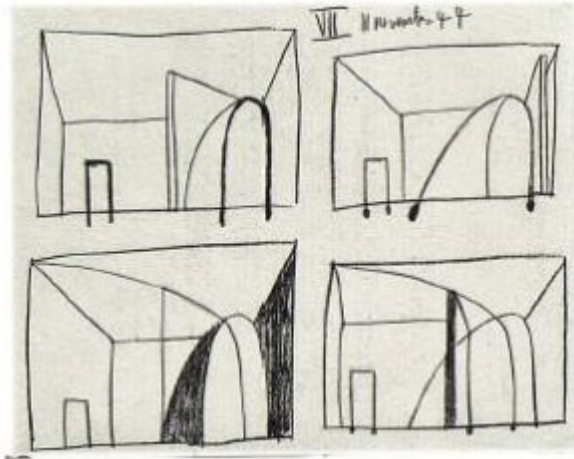
**Études VI.** Paris. 11-November/1944. Color pencil on paper [Oic]. 21 x 27 cm. Private collection.

**OPP.44:227**; PP.44:165; Z.XIV:51

**Études IX.** Paris. 11-November/1944. Color pencil on paper [Oic]. 21 x 27 cm. Private collection.

**OPP.44:228**; PP.44:168; Z.XIV:52





**Études VII.** Paris. 11-November/1944. Color pencil on paper [Oic]. 21 x 27 cm. Private collection.

**OPP.44:229**; PP.44:166; Z.XIV:53

**Visage de face.** Paris. 20-November/1944. India ink with markings & erasures on paper. 50,5 x 32,5 cm. Private collection.

**OPP.44:022**; GA.00\*:69; MG.04b\*:85





**Coq de la libération.** Paris. 23-November/1944. Oil on canvas. [100 x 81] 100,3 x 80,7 cm. Milwaukee Art Museum. (Inv M.1959.372). Gift of Mrs. Harry Lynde Bradley.

**OPP.44:001**; PP.44:179; Z.XIV:40; BS.55:185; PF.10\*:9; SN.98\*:77; TO.04\*:76

---

**Coq (Études).** Paris. 23-November/1944. India ink. [50 x 65] 51 x 66 cm. Private collection.

**OPP.44:104**; PP.44:178; Z.XIV:62; GL.81\*:21





**Le labourer céleste.** Paris. Pre 1-December]/1944.  
Illustration in L'éternelle Revue 12/01/44. 33 x 26 cm. Musée  
d'Art et d'Histoire Paul Éluard, Saint-Denis.

**OPP.44:119**; GU.00:39

**Nature morte V.** Paris. 1-December/1944. Watercolor &  
ink on paper. 34 x 25,5 cm. Sotheby's. #207, N08790,  
11/03/11.

**OPP.44:112**





**Nature morte III.** Paris. 1-December/1944. Gouache & brush & India ink on paper. 32,5 x 25,5 cm. Christie's. #112, 2845, 05/07/14.

**OPP.44:130**; WI.71\*:29

---

**Tête de femme.** Paris. 1-December/1944. India ink. 33 x 25 cm. Private collection.

**OPP.44:231**; PP.44:180; Z.XIV:61







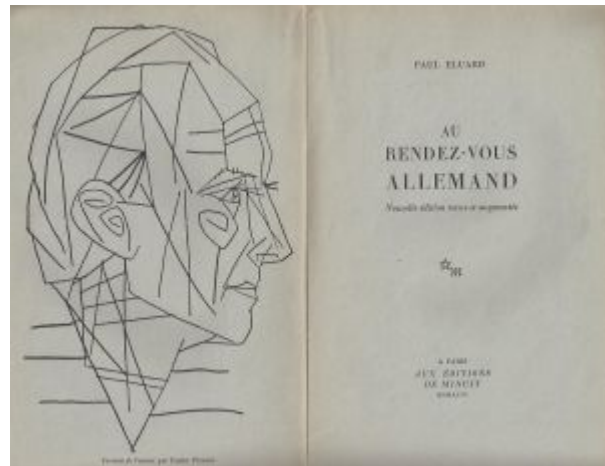
**Verre et fruit.** Paris. 1-December/1944. Watercolor & gouache on paper. 32,5 x 25,1 cm. Waterhouse Dodd, London. Formerly Christie's. #162, 05/17/84.

**OPP.44:255**; PP.44:179a; LO.87c\*:96; NY.79d\*:n/a

---

**Portrait d'Éluard (Paul Éluard, Au rendez-vous Allemand).** Paris. December/1944. Print [After *Portrait de Paul Éluard (Paul Éluard, Sur les pentes inférieures)*]. 21 x 13,3 cm. The Museum of Modern Art, NYC. (Inv 983.1964). The Louis E. Stern Collection.

**OPP.44:235**; BA.19c\*:40p



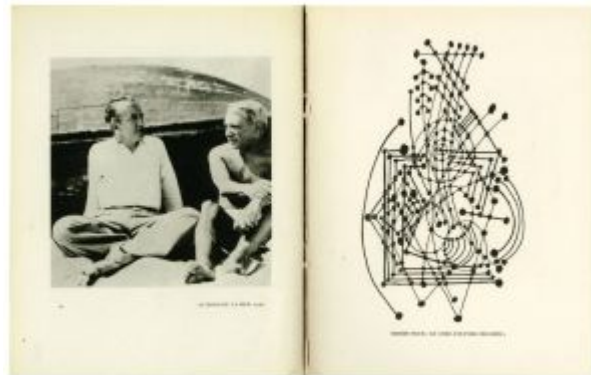


**Portrait de James Lord (Pour James Lord).** Paris. 7-December/1944. Graphite on paper. 31 x 24 cm. Private collection.

**OPP.44:230**; PP.44:181; Z.XIV:122

**Guitare (Paul Éluard, À Pablo Picasso).** Paris. 18-December/1944. Print [After *Honoré de Balzac, Le Chef-d'œuvre Inconnu (Feuille d'études)*]. 24,7 x 19,5 x 2 cm. Musée Picasso, Paris. (Inv BIB000060).

**OPP.44:242**; PA.21e\*:319





**Nature morte.** Paris. 28-December/1944. Watercolor & ink on paper. [33 x 25 cm]. Private collection.

**OPP.44:258**

**Portrait de Maya.** Paris. 31-December/1944. [Gouache on paper]. S/U. Maya Widmaier Picasso Collection, Paris.

**OPP.44:252**





**Pour Roby (Robert-J. Godet, L'Age de soleil).** Paris. 1944. Etching. 23,6 x 18 cm. The Museum of Modern Art, NYC. (Inv 996.1964). The Louis E. Stern Collection.

**OPP.44:105**; B.I:680; Ba:690.Bb

---

**Le labourer céleste.** Vallauris. 1944 [1950]. India ink on paper. 52 x 33 cm. Gagosian Gallery, New York.

**OPP.44:120**





**Découpage fait dans une feuille de journal (Aux urnes).** Paris. 1944.  
Cut-out newsprint. 5,7 x 13,5 cm. Musée Picasso, Paris. (Inv APCS A.II.3).

**OPP.44:122**; AB.00\*:159

**La distribution soulève.** Paris. 1944.  
Folded newsprint. 9,8 x 9,1 cm. Musée  
Picasso, Paris. (Inv APCS A.II.1).

**OPP.44:123**; AB.00\*:160





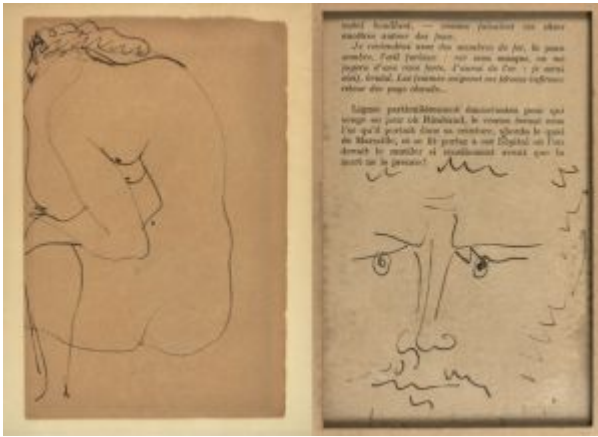
**Nature morte aux verres et nappe.** Paris. 1944. Watercolor, brush & ink & wash on paper. 33,4 x 25,2 cm. Sotheby's. #666, L16005, 02/05/16. Formerly Marina Picasso Collection.

**OPP.44:137**; NY.83b\*:57

**Tête d'homme barbu.** Paris. 1944. Pen on book page [Obverse of *Nu assis de dos*]. 17,8 x 11,4 cm. Hélène Bailly Gallery. 2016.

**OPP.44:141**





**Nu assis de dos.** Paris. 1944. Pen on book page [Reverse of *Tête d'homme barbu*]. 17,8 x 11,4 cm. Hélène Bailly Gallery. 2016.

**OPP.44:142**

**Le désir attrapé par la queue (Autoportrait de l'auteur).** Paris. 1944. Facsimile [After *Le désir attrapé par la queue (Autoportrait de l'auteur)*]. 31,7 x 24,8 cm. Christie's. #170, 1285, 05/14/01.

**OPP.44:237**



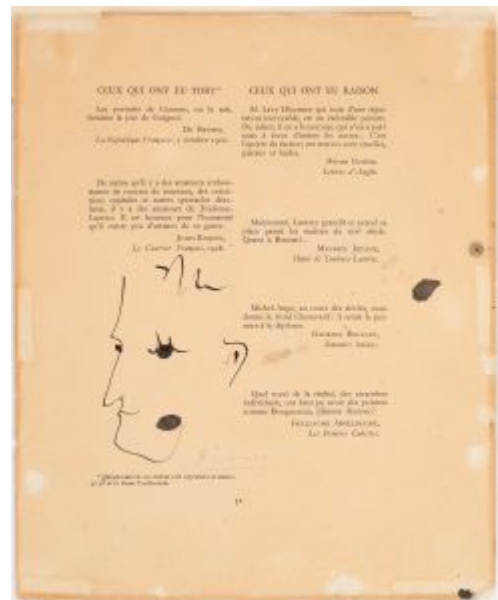


**Tête d'homme.** Paris. [1944]. Ink on paper [Obverse of *Tête d'homme*]. 28,2 x 22,8 cm. Bukowskis. #786A, 644, 11/17/22.

**OPP.44:248**

**Tête d'homme.** Paris. [1944]. Ink on paper [Reverse of *Tête d'homme*]. 28,2 x 22,8 cm. Bukowskis. #786A, 644, 11/17/22.

**OPP.44:249**







**Immeubles Rue de Savoie et vue de Notre-Dame.** Paris. 1944. Pen & brown ink on paper [Obverse of *Immeubles Rue de Savoie et vue de Notre-Dame*]. 20 x 24 cm. Bonhams. #3, 27623, 12/06/22.

**OPP.44:250**

**Immeubles Rue de Savoie et vue de Notre-Dame.** Paris. 1944. Pen & brown ink on paper [Reverse of *Immeubles Rue de Savoie et vue de Notre-Dame*]. 20 x 24 cm. Bonhams. #3, 27623, 12/06/22.

**OPP.44:251**





**Femme nue accroupie.** Paris. [1944]. Crayons [OIC], 50 x 33,5 cm.  
Private collection. Formerly Sotheby's. #172, 06/29/83.

**OPP.44:256**; PP.44:182

**Cœur volant (Pour Peter Watson, L'Auteur).** Paris.  
1944. Pen & ink on printed page. 17,5 x 12 cm. Sotheby's.  
#161, W05723, 07/12/05.

**OPP.44:053**

